

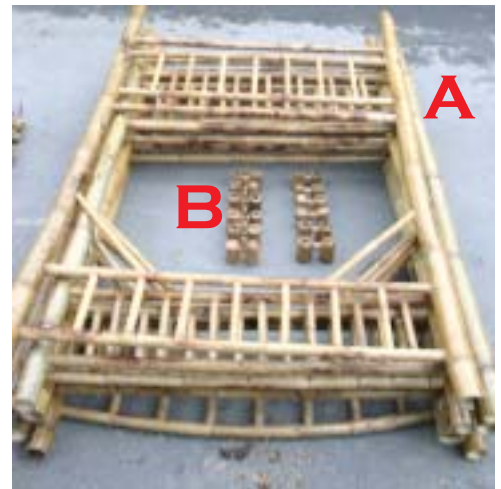
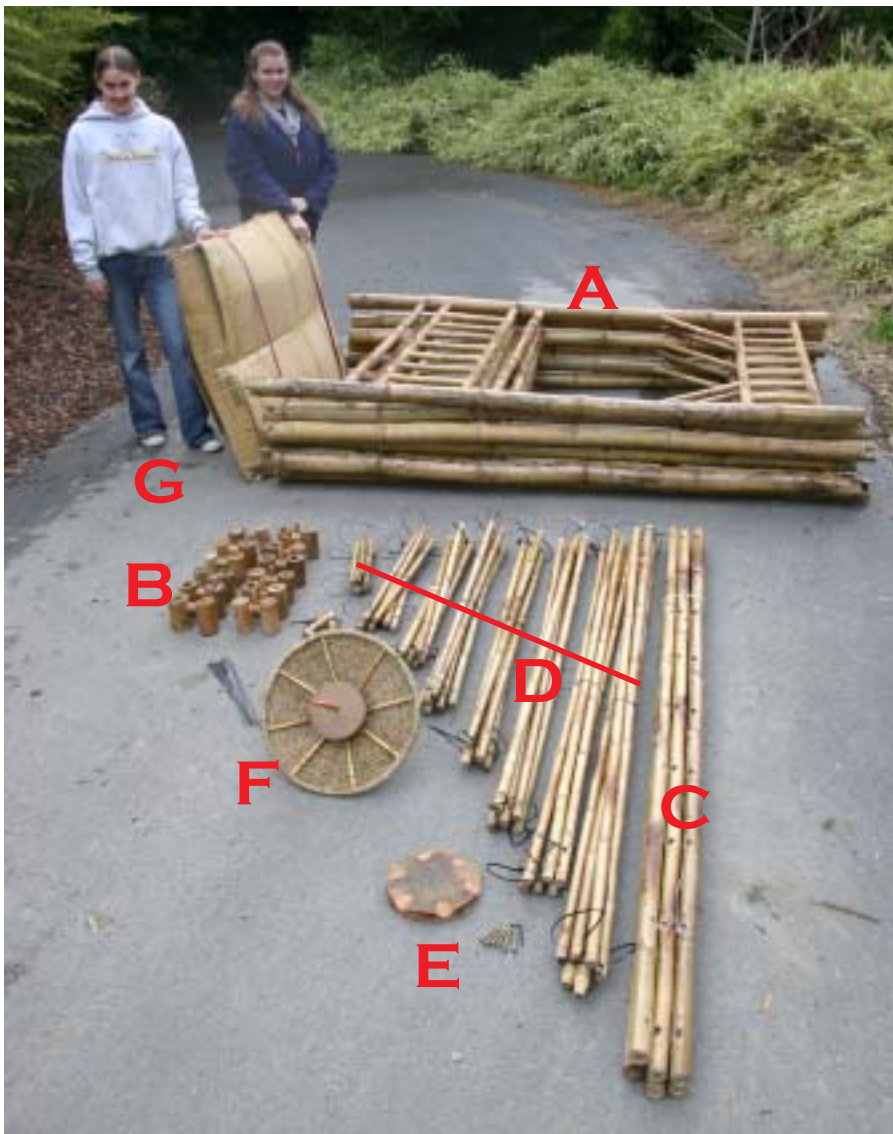


GAZEBO ASSEMBLY MANUAL

SYMPHONY PRODUCTS
5601 FREEDOM BLVD.
APTOS, CA 95003
(831)685-4722 FAX (831)661-0243
sales@symphonyproducts.com
www.symphonyproducts.com

Lay out the parts. Here is what should be included:

- A 6 side assemblies, one of which is the door section
- B 12 dogbones, 6 bottom and 6 top with pin (the letter on one matches the letter on the base and top of the side panels) 24 screws are included for high wind areas.
- C 6 rafters with 6 zip ties for attachment
- D 9 groups of roof purloins, 6 in each bundle, connected with zip ties
- E 1 center roof support block and 6 screws along with hex wrench
- F 1 decorative cap and hook
- G 2 boxes of thatch (66 square feet) String for tying included.



Find the bundle of dogbones and make sure the letter on the parts match the letter on the ends of the sides. Lay out the parts, note the bottom dog bones have no pin in the center and the top dogbones have a dowel installed.





GAZEBO ASSEMBLY MANUAL

Stand up the first side. Do not place the door until last. Place a bottom dogbone in the slot at the bottom of each leg. Note that the slot goes on the inside of the gazebo.

Now find the next panel by checking the number at the bottom of each leg. For example K-4 sits next to K-3.



Now insert the top dogbone between the top of the adjacent legs. Note that each dogbone is numbered to match. The top dogbone has a dowel pointing up. Once the top is secure, the two panels will stand on their own.



Place each adjacent panel making sure that the numbers match, and the slot and labels are toward the inside. As each panel is placed, insert the top and bottom dogbone in the ends of the legs.

Optional Step - For extra strength secure the dogbones at both the top and bottom to the legs with number 2 galvanized drywall screws. Use a hand or power screwdriver.



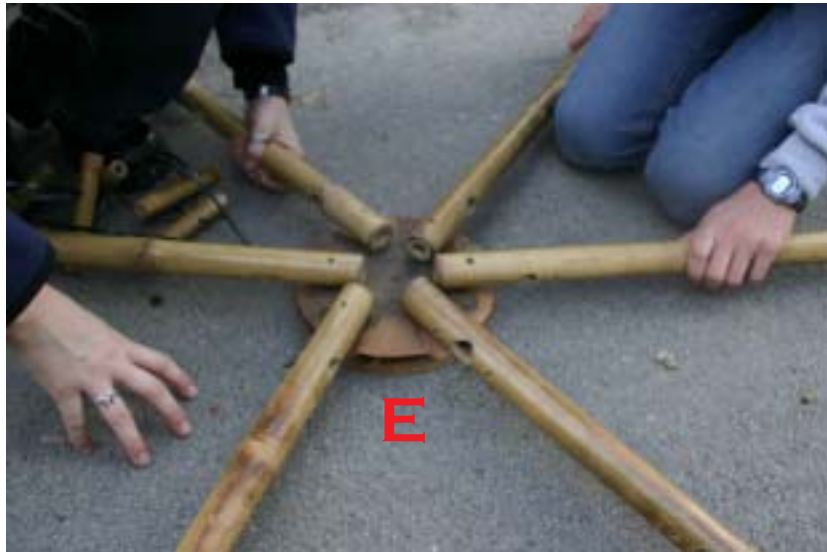
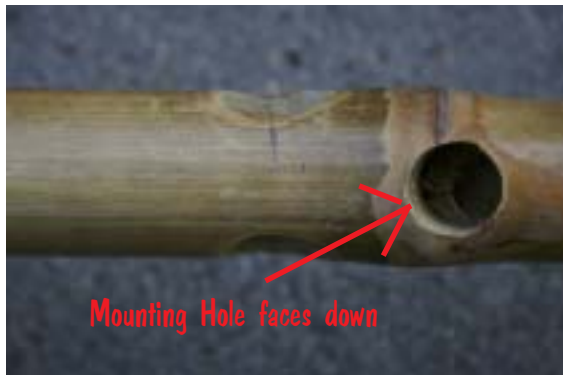
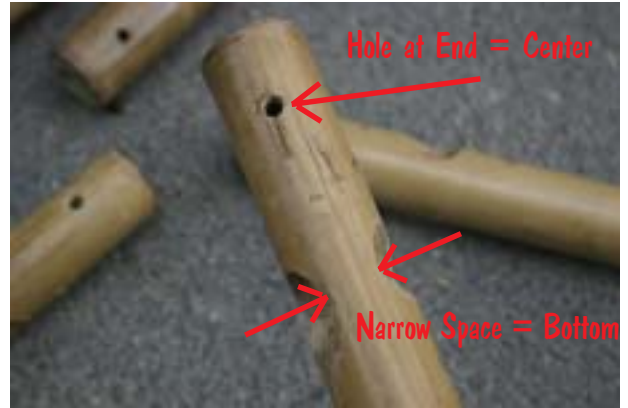


GAZEBO ASSEMBLY MANUAL

Find an area next to the gazebo to set up the roof structure. It should be about the same area as the gazebo and have easy access to the gazebo.

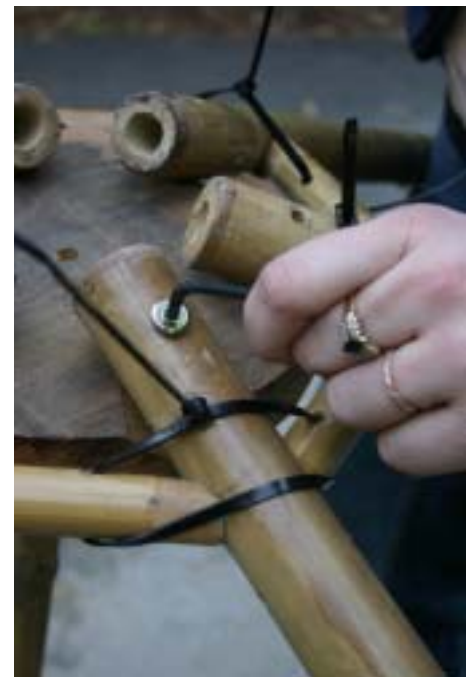
Place the round wood block (E) at the center of the area.

Find the roof rafters (C) and set around the perimeter. The end with the hole close to the end goes in the center as shown. Each rafter has a top and bottom. The gap between the holes is wider on the top and each rafter should be set with the wide side up. Each rafter also contains a mounting hole shown below. It faces down.



Now locate the shortest group of roof purloins (D). There are 6 linked together with zip ties. Link the rafters together with the purloins. Begin to tighten the zip ties.

Next insert and tighten the screws with the hex wrench provided. Then tighten up the zip ties.





GAZEBO ASSEMBLY MANUAL



The top of the roof should be about 36" off the ground. You may place a support under the block (E) to aid in assembly.

Now the remaining roof purlins will be added one ring at a time, from the shortest to the longest.



Snug down the zip ties on each group when all are in place. Then cut off the long unused end.





GAZEBO ASSEMBLY MANUAL



Pick up the rafter assembly by the rafters and lift the assembly high enough to walk it into position over the gazebo.



As you bring the rafter assembly to rest, place each rafter onto the peg sticking up from each dogbone. Some adjustment of the side pieces may be needed to get all the holes to align.

Attach each rafter to the dogbone with a zip tie.



Warning: climbing on the roof can be dangerous. Use ladders and scaffolding or seek professional help. The thatch is attached by tying a row of thatch to each roof purlin. Tie the thatch on the outside of the gazebo for the nicest looking job. Start at the outer edge and tie to the second purlin first, all the way around. Then do the third purlin, repeating all the way to the top. Shorten the thatch used for the top row. When finished the decorative cap is attached at the peak. Traditionally coconut string is used for tying but any string can be used.

